

Assessment of city programs for fungibility in international markets: application of the MAAP Tool

Crediting to support subnational actions

Miguel Rescalvo
Paris, May 31 2016

Subnational Action - Cities

- New mitigation landscape
- Specific challenges for cities
 - Level of Authority
 - Access to Finance
 - Capacity
- What do we need?
 - Scalability / Aggregation
 - Risk signals
 - Structure
 - Crediting
 - level of assurance

What is the MAAP Tool?

- MAAP (Mitigation Action Assessment Protocol)
- Tool to assess mitigation actions
- Applicable to diverse MA including LCCP
- Focused on crediting
- Quantitative assessment of 4 areas
 - Design of the MA
 - Management Entity
 - Investment Environment
 - Sustainable Development

How MAAP Tool can support MA in cities?

Building blocks for the development MA seeking support

Level of confidence to governments and investors: viability and level of risk ensuring emissions integrity.

Tool to compare different carbon assets and their mitigation value

Facilitate benchmark and improvement

Development Process

Stakeholders engagement

- Carbon Expo May 2013
- Latin America Carbon Forum (Rio de Janeiro), FICCI (New Delhi), Asian Carbon Forum (Bangkok) – Fall 2013
- GHG verifiers. Thailand Feb 2016

Working group - Globally Networked Carbon Markets

- WB Internal Meeting – June 2013
- Paris Working Group meeting 1 – Sept. 2013
- Webinar Update – Dec. 2013
- Paris Working Group meeting 2-February 2014

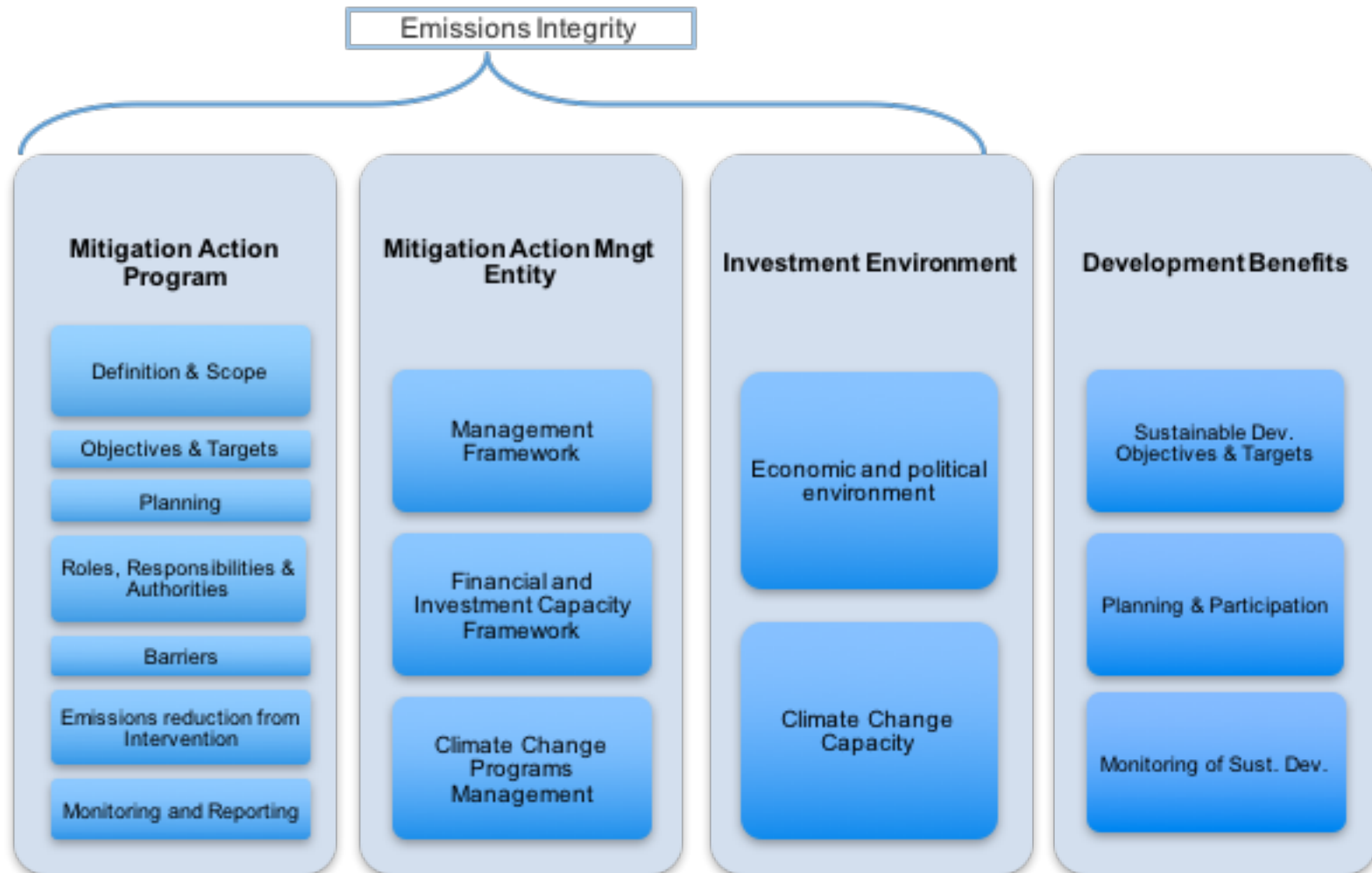
Peer review

- Comments invited from the Working Group, selected individuals and organizations
- Technical peer reviews 2014 - (IdeaCarbon, C2B2)
2015- IISD, New Climate Institute

Testing and Pilots

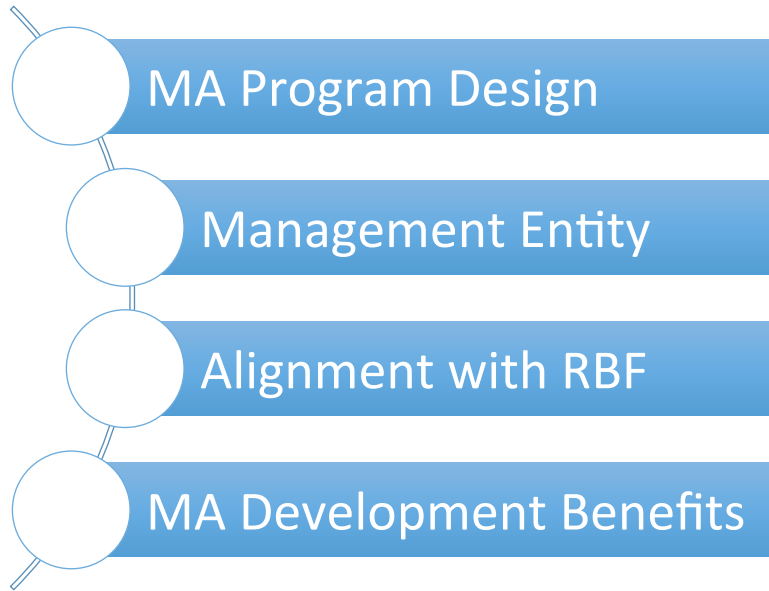
- Peru, Ecuador, Thailand

MAAP Tool Structure



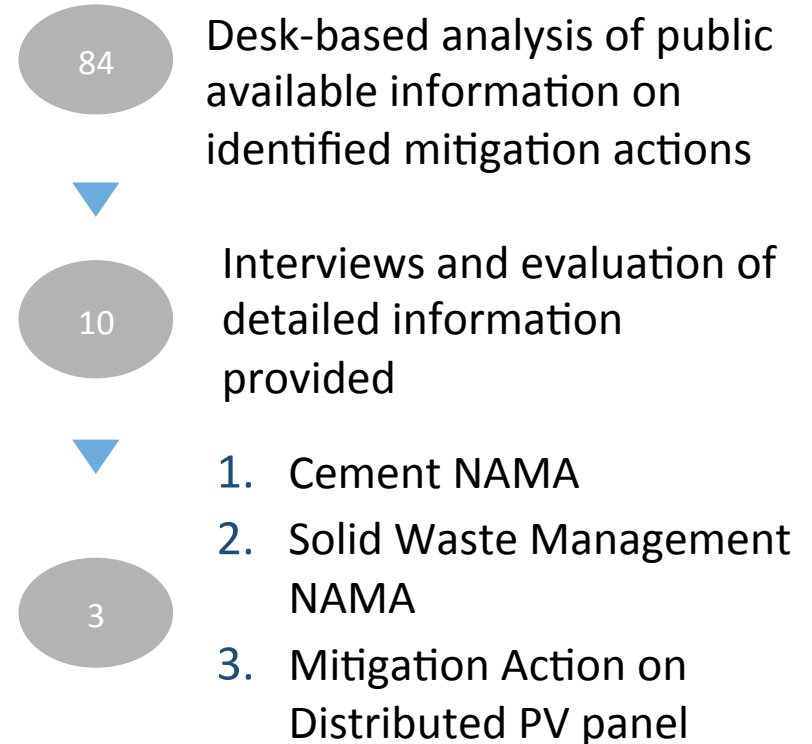
Peru Mitigation Action Evaluation Framework

- Adaptation of MAAP Tool to Peru Government Priorities



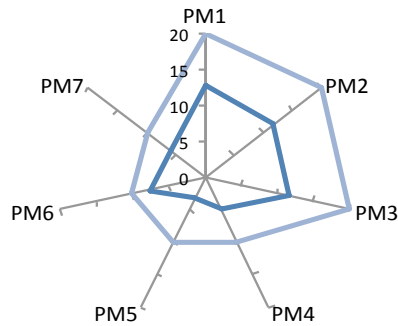
- Short version available for Mitigation Actions on early stages
- Provides input for the future Mitigation Action Registry

Evaluation Process

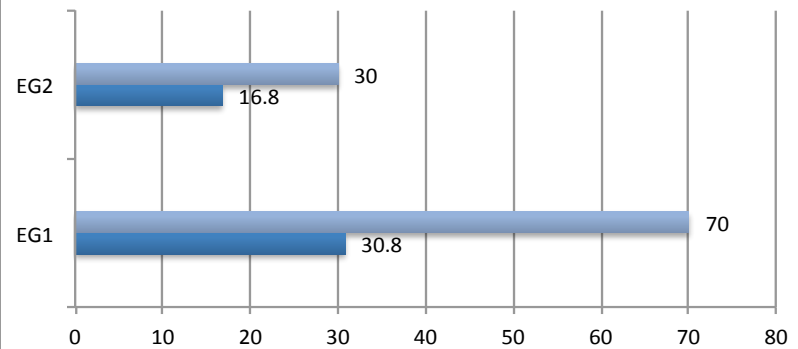


Peru Mitigation Action Evaluation Framework Solid Waste Management NAMA

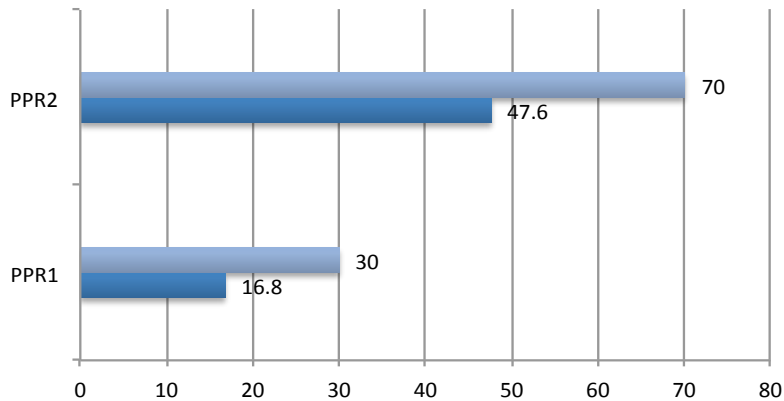
Módulo: Programa de la Medida de Mitigación



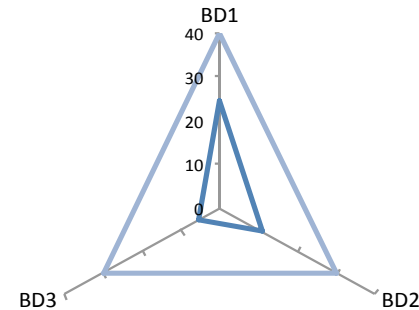
Módulo: Entidad Gestora



Módulo: Alineación PPR



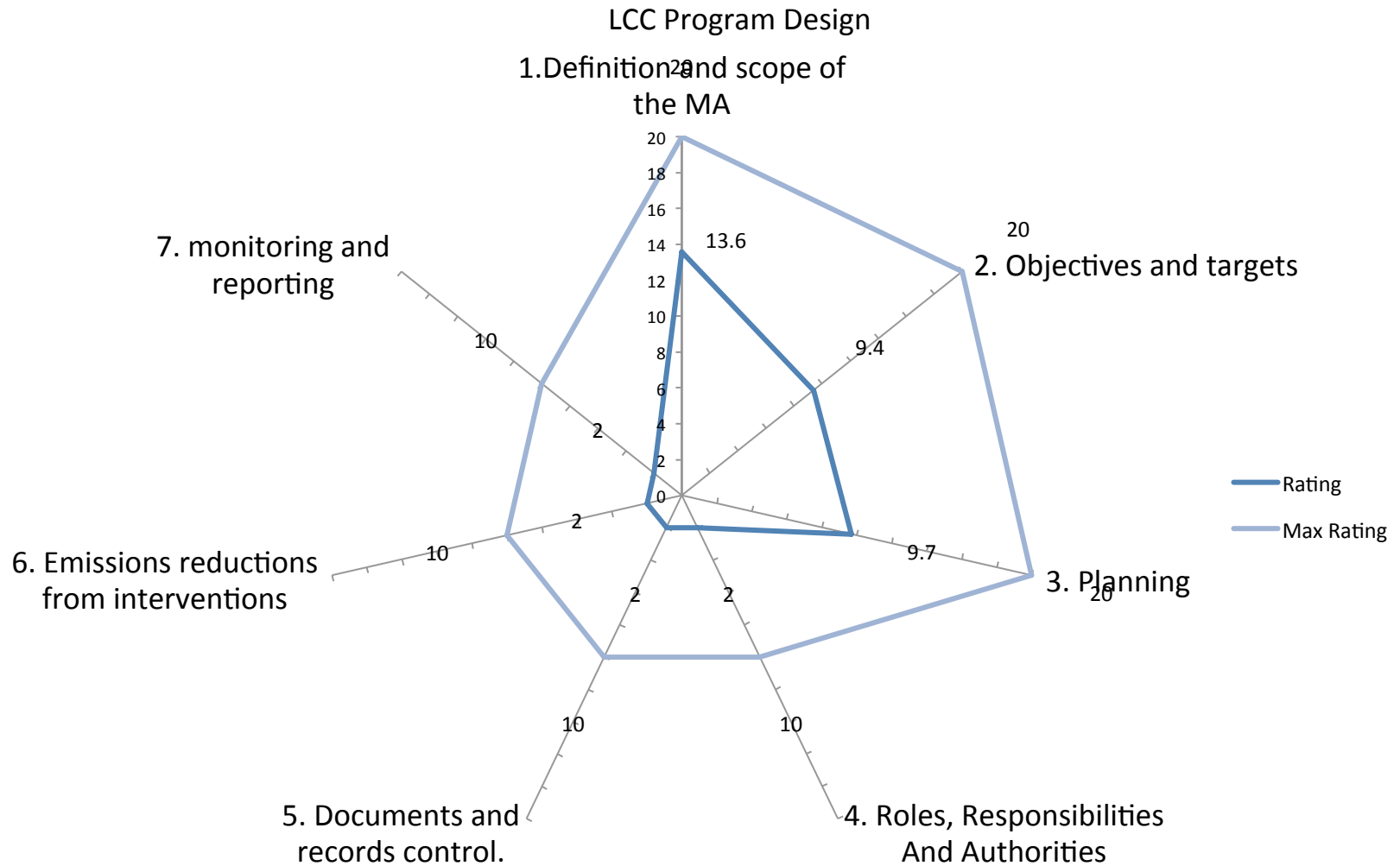
Módulo: Contribución Desarrollo Sostenible



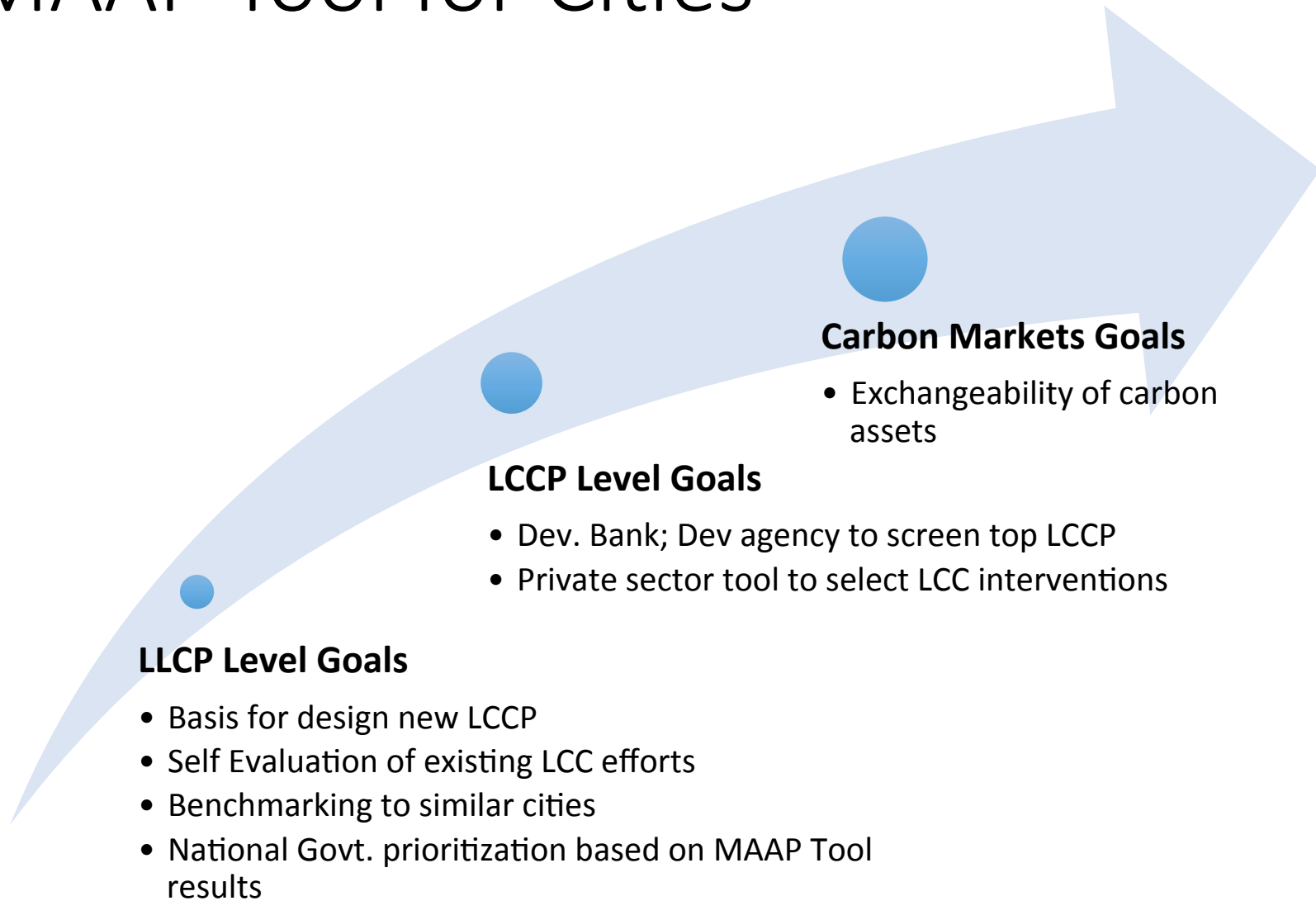
LCC Program- Phitsanulok Feb 2016

Module	Impact Area		Weighted	rating	Weighted Rating	Max Rating	Module Rating
LCC Program Design	PM1	1. Definition and scope of the MA	20%	68	13.6	20	40.7
	PM2	2. Objectives and targets	20%	47	9.4	20	
	PM3	3. Planning	20%	48.5	9.7	20	
	PM4	4. Roles, Responsibilities And Authorities	10%	20	2	10	
	PM5	5. Documents and records control.	10%	20	2	10	
	PM6	6. Emissions reductions from interventions	10%	20	2	10	
	PM7	7. monitoring and reporting	10%	20	2	10	
LCC Program Management Entity LCC Committee	EG1	1. Management Framework	50%	47	23.5	50	40.1
	EG2	2. Finance and investment	20%	35	7	20	
	EG3	3. Climate change programs management	30%	32	9.6	30	
Sustainable Development Contribution	BD1	1. Development	40%	47	18.8	40	42.8
	BD2	2. Planning and participation	30%	59	17.7	30	
	BD3	3. Monitoring of development benefits.	30%	21	6.3	30	

LCC Program- Phitsanulok Feb 2016



MAAP Tool for Cities



Conclusions

- MAs at the city level need a structure to attract support
- MA needs to be managed beyond identifying mitigation projects
- Crediting- affect this structure
- MAAP Tool provides building blocks
- MAAP flexible / customized